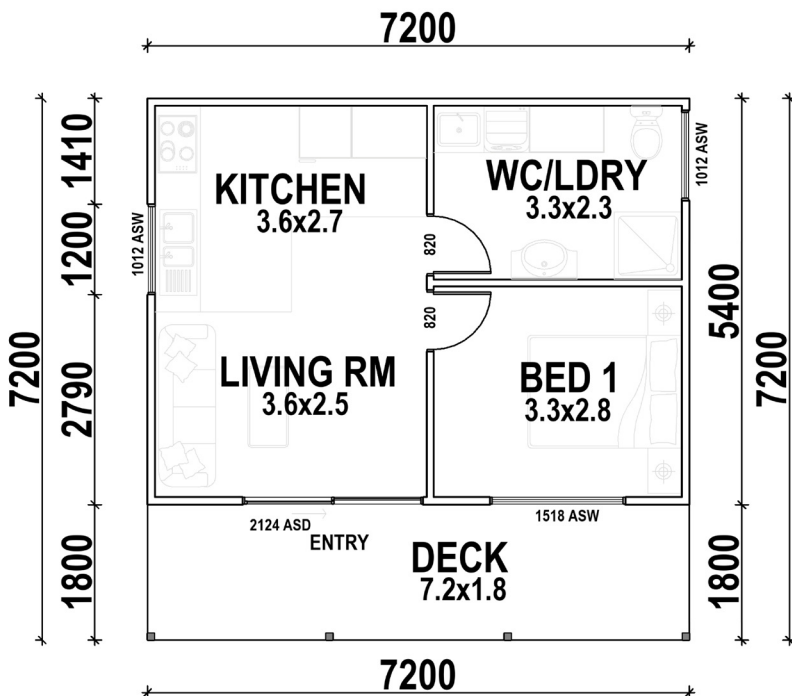




**KIT HOMES**

**OXFORD**

The compact Oxford is the ideal home for independent living. This 1 bedroom kit home comes with a cosy living area and an outdoor verandah so you can enjoy the best of both an indoor and outdoor lifestyle.

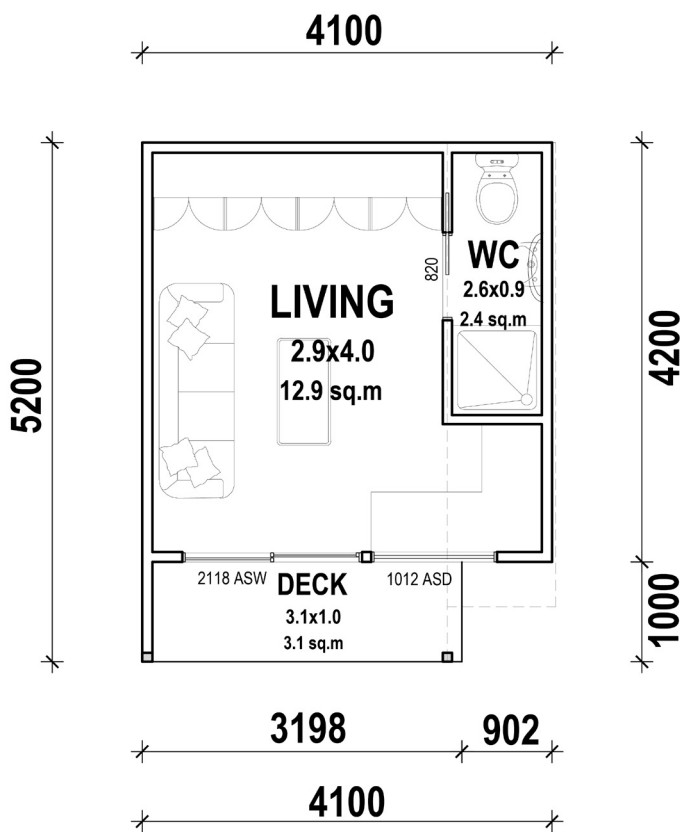


ENCLOSED	OTHER
38.88m <sup>2</sup>	12.96m <sup>2</sup>

**TOTAL 51.84m<sup>2</sup>**

1
 1
 1

For a larger view of our floor plans, please check our website.



**KIT HOMES**

**OAKDALE**

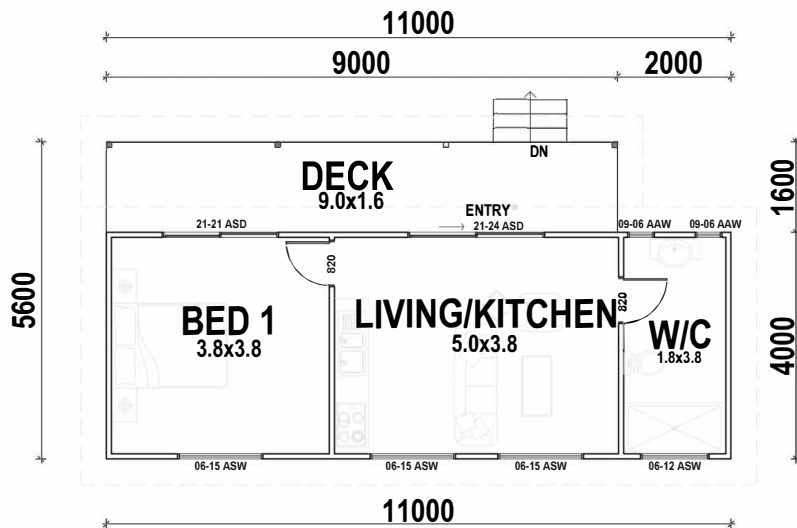
With a spacious living room and an outdoor deck, the small and compact Oakdale is the perfect addition to your property.

ENCLOSED	OTHER
17.22m <sup>2</sup>	3.20m <sup>2</sup>
<b>TOTAL 20.42m<sup>2</sup></b>	
1-	1  1

For a larger view of our floor plans, please check our website.



**iBUILD**<sup>TM</sup>  
Building Solutions



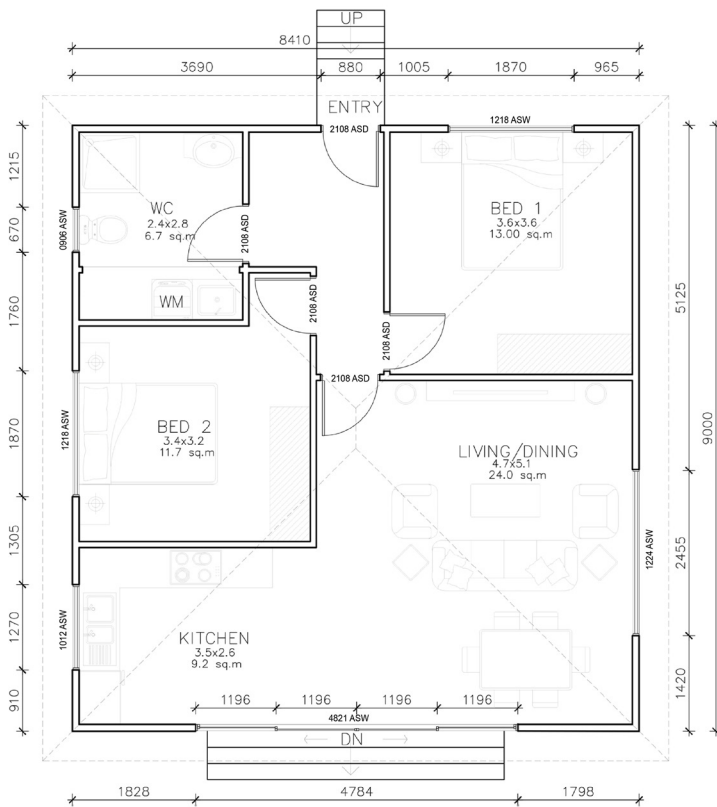
**KIT HOMES**

**WHYALLA**

With its slanted roof and open style veranda, the Kit Homes Whyalla is perfect for personal sanctuaries and entertainment areas to suit most lifestyles.

ENCLOSED	OTHER
44.00m <sup>2</sup>	14.40m <sup>2</sup>
<b>TOTAL 58.40m<sup>2</sup></b>	
1	1
	1

For a larger view of our floor plans, please check our website.



**KIT HOMES**

**CASA BIANCA**

The compact Casa Bianca is perfect for small families looking for a holiday home. The eye catching kit home comes packed with 2 bedrooms and cozy living areas, making it the perfect place to enjoy your holiday.

ENCLOSED	OTHER
75.07m <sup>2</sup>	0.00m <sup>2</sup>
<b>TOTAL 75.07m<sup>2</sup></b>	
2	1  1

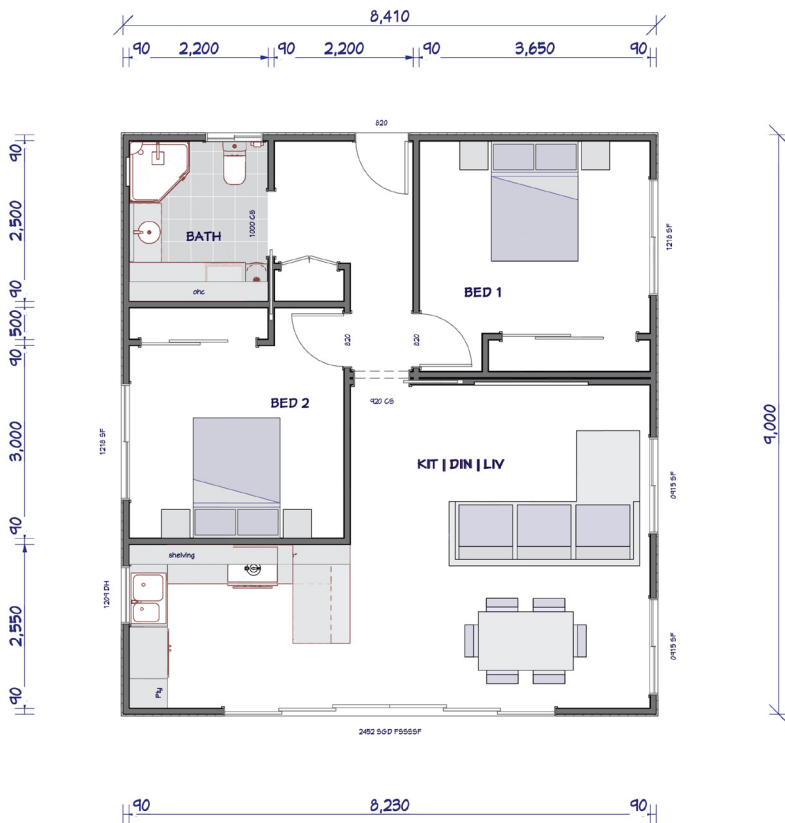
For a larger view of our floor plans, please check our website.



**KIT HOMES**

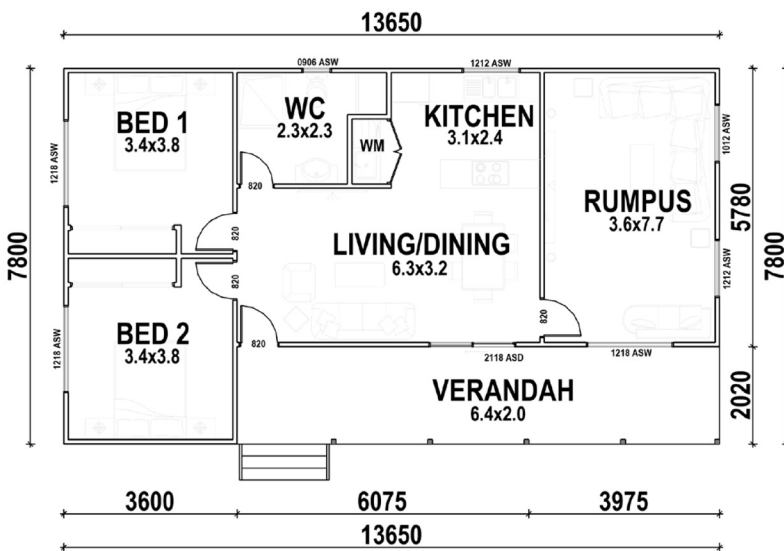
**CASA BIANCA 42**

The sister to the original Kit Homes Casa Bianca, the Casa Bianca 42 similarly brings a perfectly holiday feeling to a compact kit home. Boasting 2 bedrooms, and an open living area with panoramic views, the Kit Homes Casa Bianca 42 brings the calm to your doorstep.



ENCLOSED	OTHER
75.69m <sup>2</sup>	0.00m <sup>2</sup>
<b>TOTAL 75.69m<sup>2</sup></b>	
2	1
	1

For a larger view of our floor plans, please check our website.



**KIT HOMES**

**ROMA**

The contemporary design with an open floor plan highlights a neat verandah shading the living area. The Roma would perfectly suit those looking for a Granny flat or something similar.

ENCLOSED	OTHER
86.17m <sup>2</sup>	20.30m <sup>2</sup>
<b>TOTAL 106.47m<sup>2</sup></b>	
2	1  1

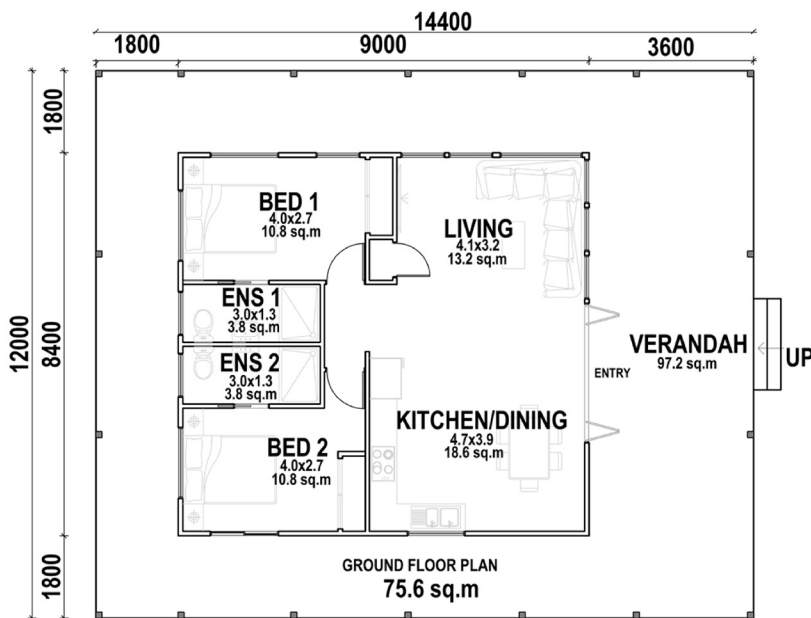
For a larger view of our floor plans, please check our website.



**KIT HOMES**

**WESTWOOD**

Let the Westwood become your sanctuary. Beautifully balanced, and with shady verandahs on three sides, the Westwood truly lives up to its name.



ENCLOSED	OTHER
75.60m <sup>2</sup>	97.20m <sup>2</sup>

**TOTAL 172.80m<sup>2</sup>**

 2
  2
  1

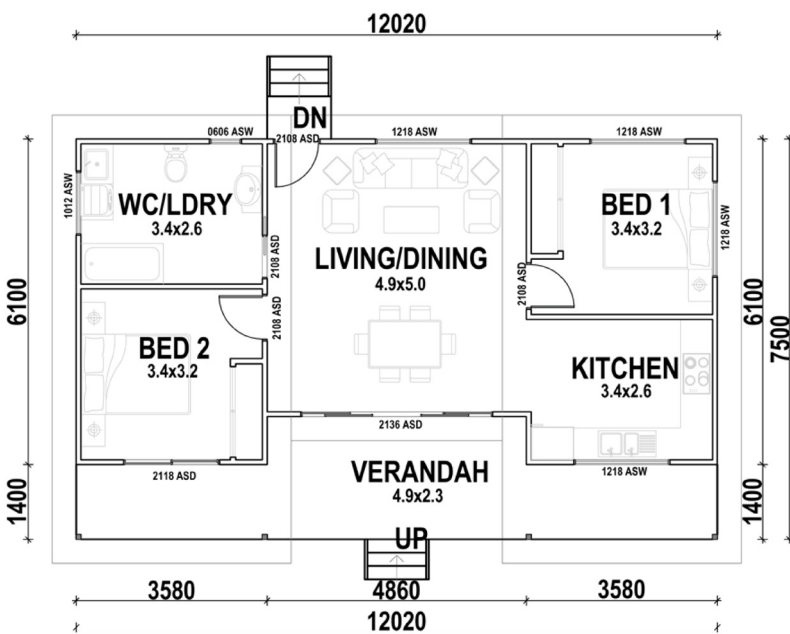
For a larger view of our floor plans, please check our website.






**KIT HOMES**

**MELROSE**

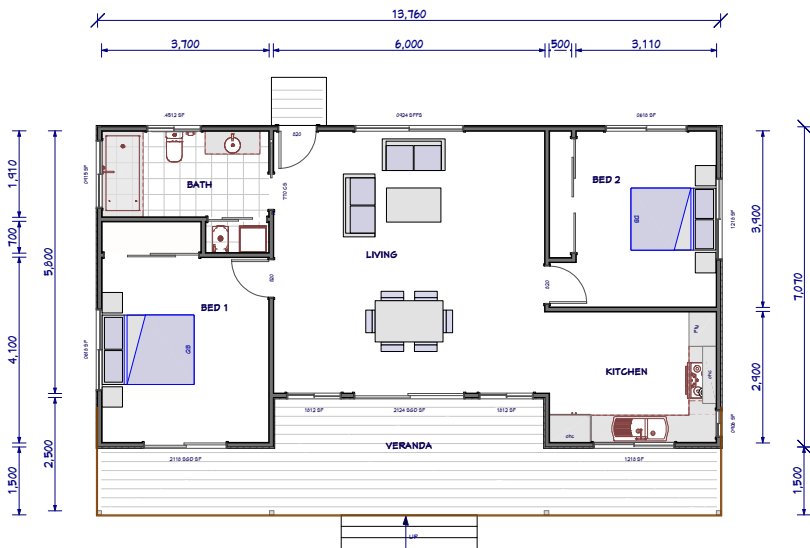
This modern looking design with its skillion roof is neat and compact. Kit homes Melrose is perfectly suited for a retired couple. It can be used for a vacation/holiday home due to its features. The snug deck leading off the living area is ideal for alfresco dining.



ENCLOSED	OTHER
68.37m <sup>2</sup>	22.16m <sup>2</sup>
<b>TOTAL 91.11m<sup>2</sup></b>	
 2  1  1	

For a larger view of our floor plans, please check our website.





**KIT HOMES**

**MELROSE 42**

The modern Kit Homes Melrose 42 brings the same charisma and contemporary feelings of the original Melrose, with a slightly larger footprint. The living area opens up to the spacious deck and alfresco area for all your entertaining needs.

ENCLOSED	OTHER
91.92m <sup>2</sup>	27.78m <sup>2</sup>
<b>TOTAL 119.70m<sup>2</sup></b>	
2	1
	1

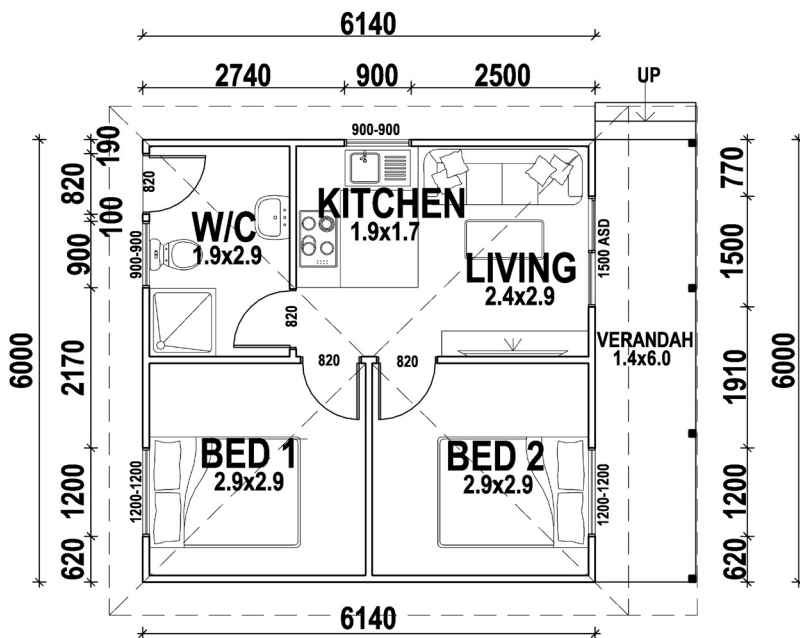
For a larger view of our floor plans, please check our website.



**KIT HOMES**


# PORTLAND

If you're looking for neat and compact cabins, the Portland is for you. Ideal as a fishing lodge, art studio, holiday cabin or a parent retreat, the Portland will catch the breezes and show you amazing views.

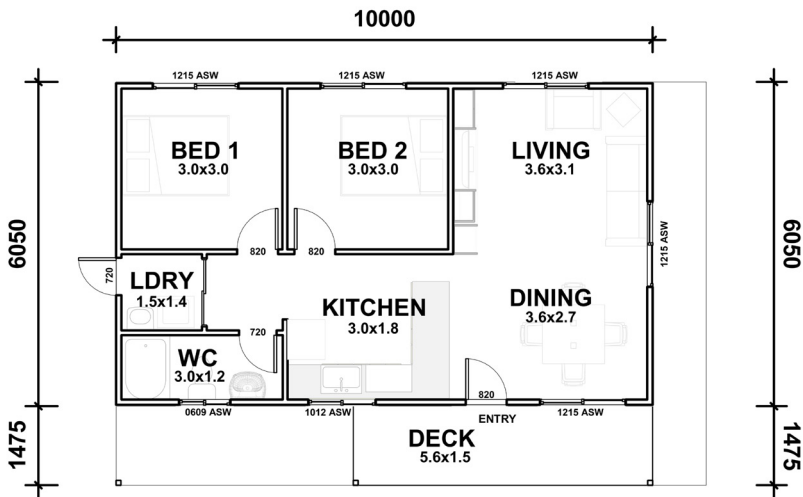


ENCLOSED	OTHER
36.84m <sup>2</sup>	8.40m <sup>2</sup>

**TOTAL 45.24m<sup>2</sup>**

 2
  1
  1

For a larger view of our floor plans, please check our website.



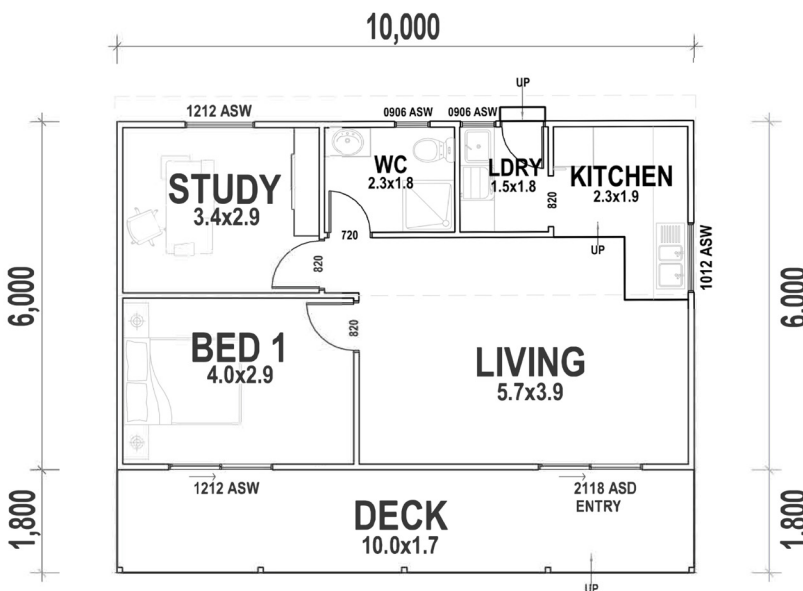
**KIT HOMES**

**PARRAMATTA**

The 2 bedroom Parramatta comes packed with everything you need in a granny flat. The simple design is complimented by a front deck which will allow you to enjoy the outdoors making it an ideal choice for a granny flat.

ENCLOSED	OTHER
<b>60.00m<sup>2</sup></b>	<b>8.37m<sup>2</sup></b>
<b>TOTAL 68.37m<sup>2</sup></b>	
2	1
	1




For a larger view of our floor plans, please check our website.



**KIT HOMES**

**AVILA**

With the simplistic design and full verandah across the front, the Avila is always a winner for folks looking at homes of this size.

ENCLOSED	OTHER
60.00m <sup>2</sup>	18.00m <sup>2</sup>
<b>TOTAL 78.00m<sup>2</sup></b>	
 2	 1
	 1

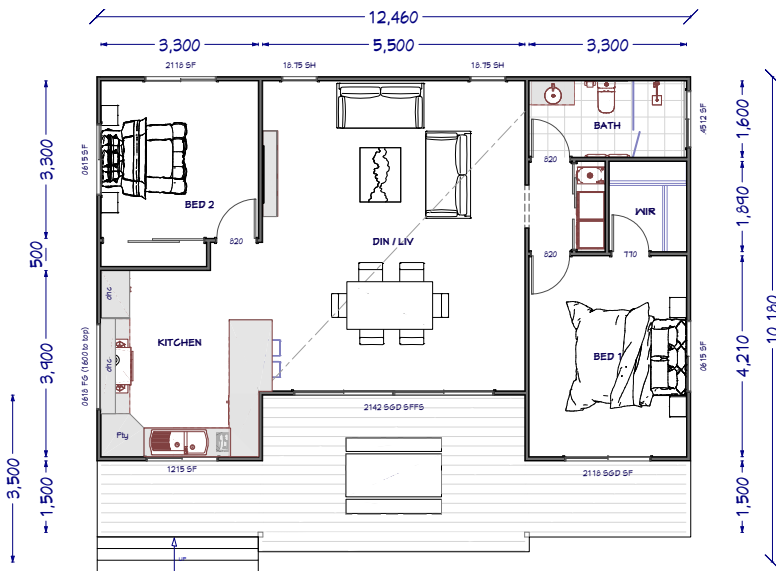
For a larger view of our floor plans, please check our website.



**KIT HOMES**

**MACKAY**

Compact, stylish, and modern, this symmetrical fantasy flawlessly amalgamates space and luxury to bring you outstanding country-living. Let Mackay's verandah keep you cool as you immerse yourself in what the surrounding landscape has to offer.



ENCLOSED	OTHER
93.00m <sup>2</sup>	31.00m <sup>2</sup>

**TOTAL 124.00m<sup>2</sup>**

 2
  1
  1

For a larger view of our floor plans, please check our website.

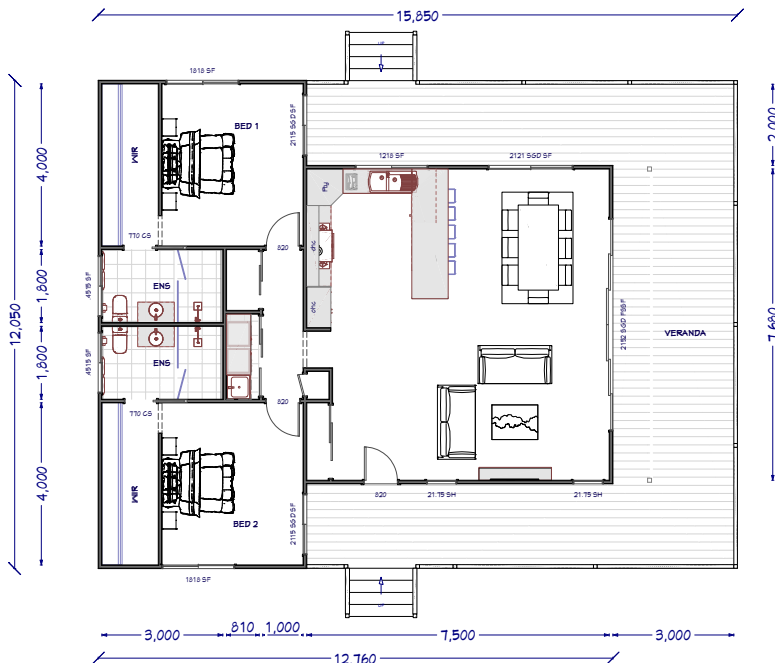


**iBUILD**<sup>TM</sup>  
Building Solutions

**KIT HOMES**

**TAMWORTH**

Bring your dreams to life with the Tamworth in all its glory. The wrap around verandah is sure to be the forefront of many family memories being made. Ideal for small families, the spacious design offers ample room and privacy to all.

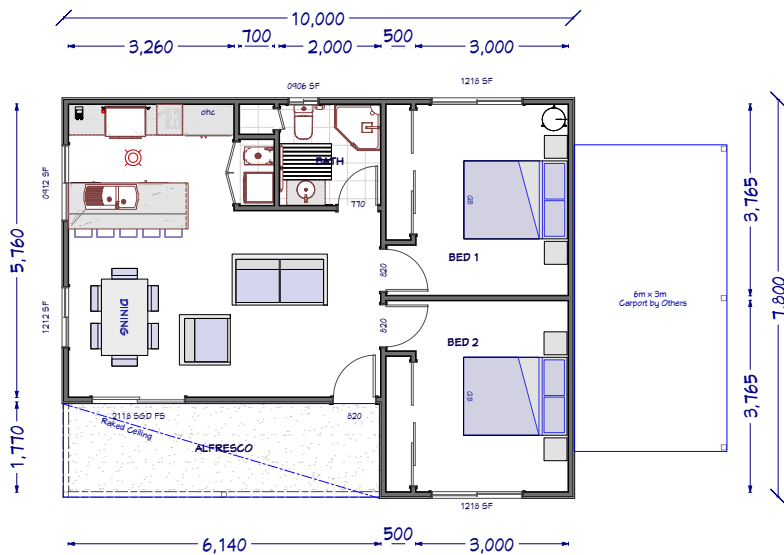


ENCLOSED	OTHER
123.00m <sup>2</sup>	68.00m <sup>2</sup>

**TOTAL 191.00m<sup>2</sup>**

 2
  2
  1

For a larger view of our floor plans, please check our website.



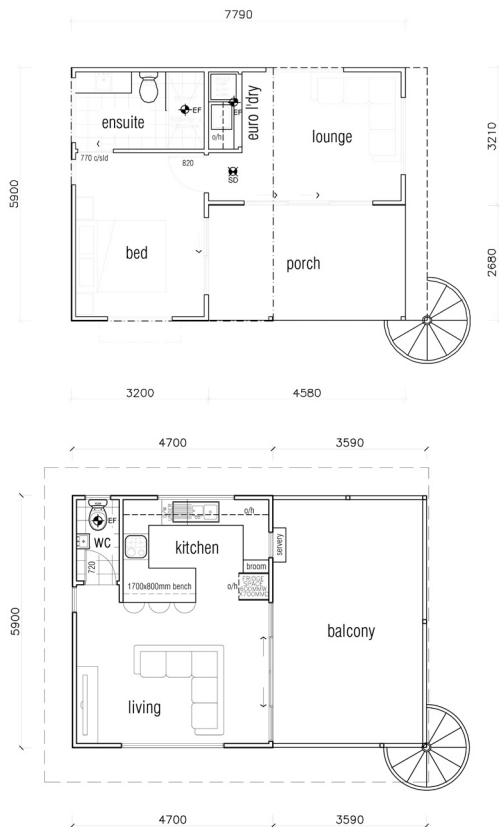
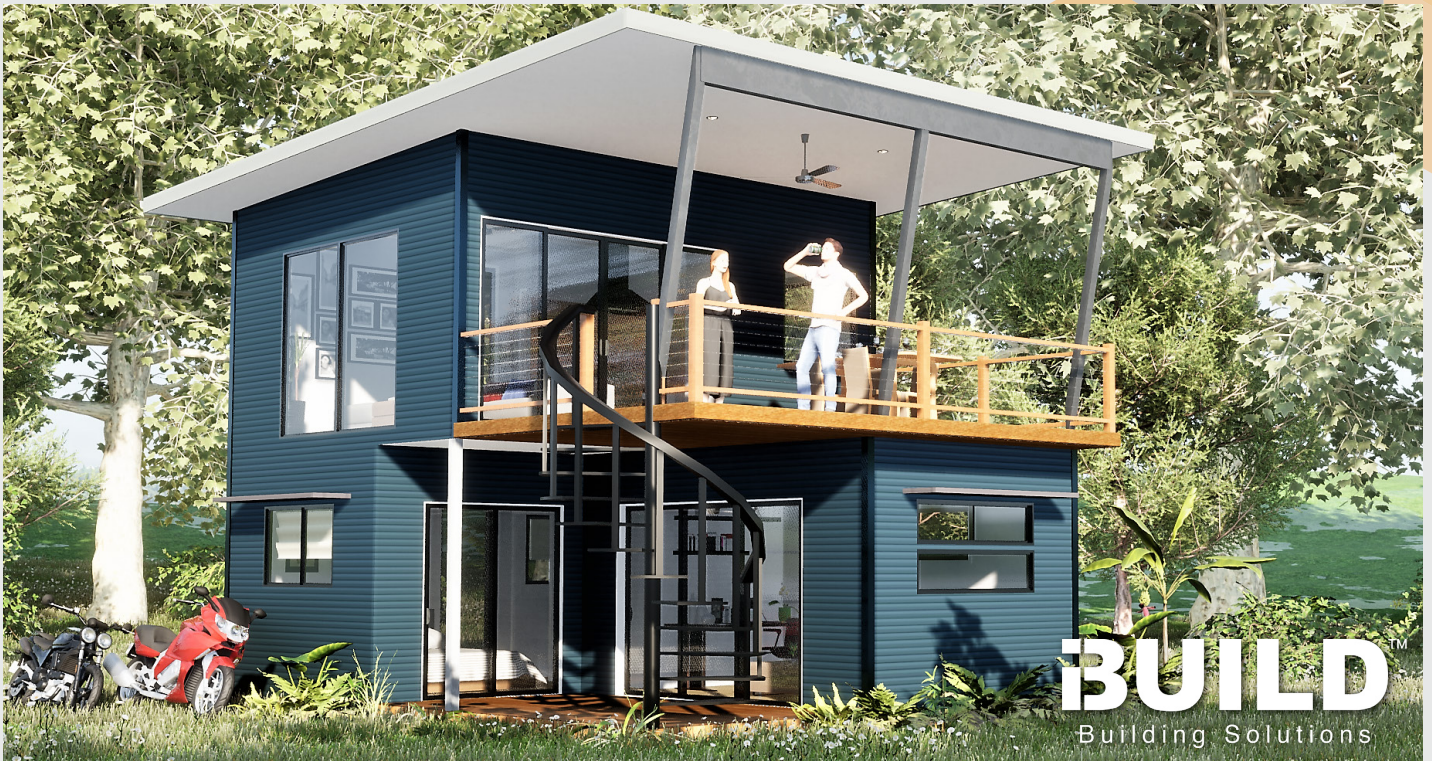
**KIT HOMES**

**EMERALD**

A blend between traditional and modern style, the Kit Homes Emerald compliments grand aesthetics for those with a contemporary eye.

ENCLOSED	OTHER
66.50m <sup>2</sup>	11.50m <sup>2</sup>
<b>TOTAL 78.00m<sup>2</sup></b>	
2	1
	1

For a larger view of our floor plans, please check our website.



**KIT HOMES**

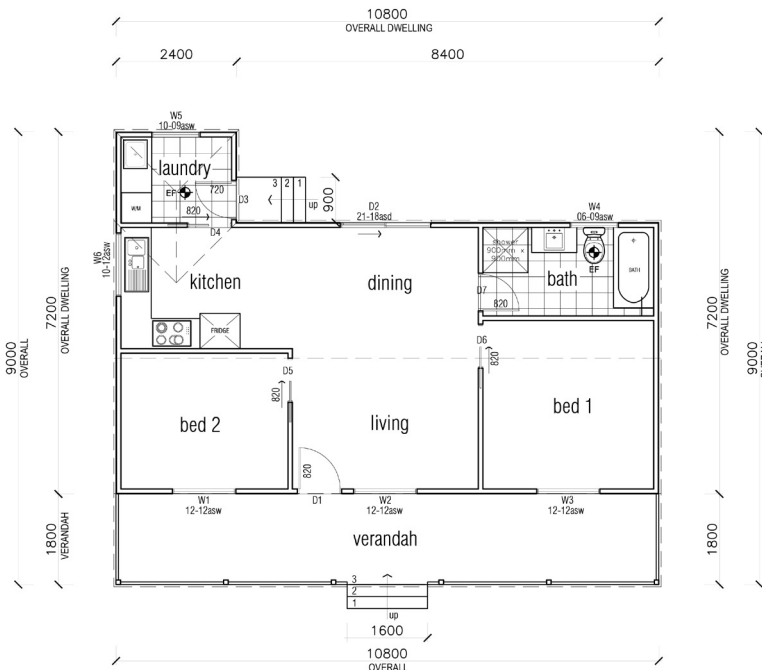
**ABBAY VIEW**

The Kit Homes Abbey View allows for some great scenic views as a double storey holiday house with an impressive entertainment deck for those warm evenings.

ENCLOSED	OTHER
61.34m <sup>2</sup>	33.37m <sup>2</sup>
<b>TOTAL 94.71m<sup>2</sup></b>	
2	2
	1

For a larger view of our floor plans, please check our website.








**KIT HOMES**

**ARMIDALE**

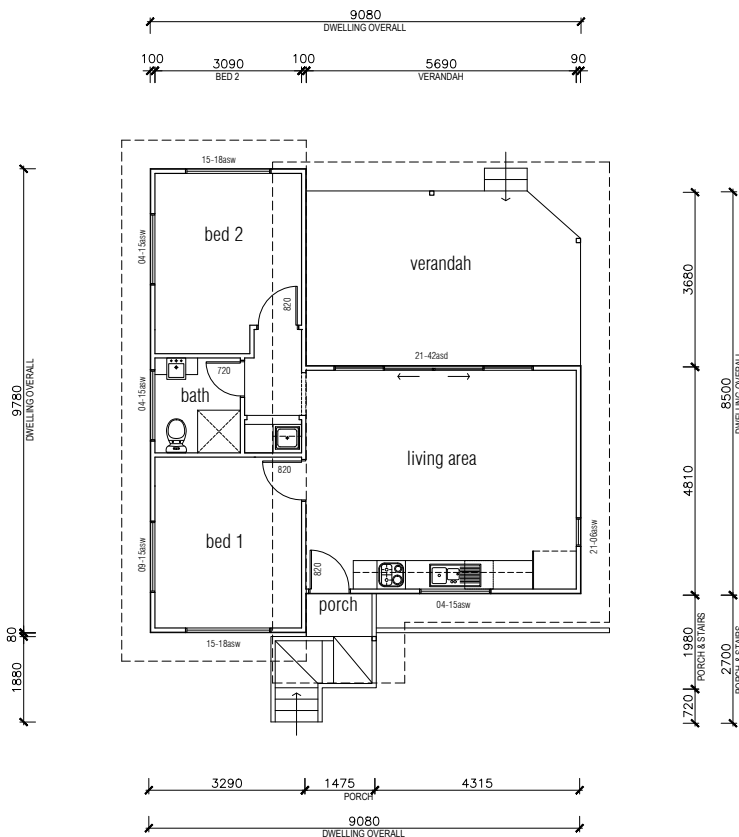
Ideal for young families or retired people, Kit Homes Armidale will take no time to make you feel comfortable. Living room and both bedrooms have the verandah facing windows for enough natural light to brighten your home. An exclusive laundry room for people wanting it to be separate from the main living areas.

ENCLOSED	OTHER
62.64m <sup>2</sup>	19.44m <sup>2</sup>
<b>TOTAL 82.08m<sup>2</sup></b>	
 2  1  1	

For a larger view of our floor plans, please check our website.






**iBUILD**<sup>TM</sup>  
Building Solutions



**KIT HOMES**

**MUDGEES**

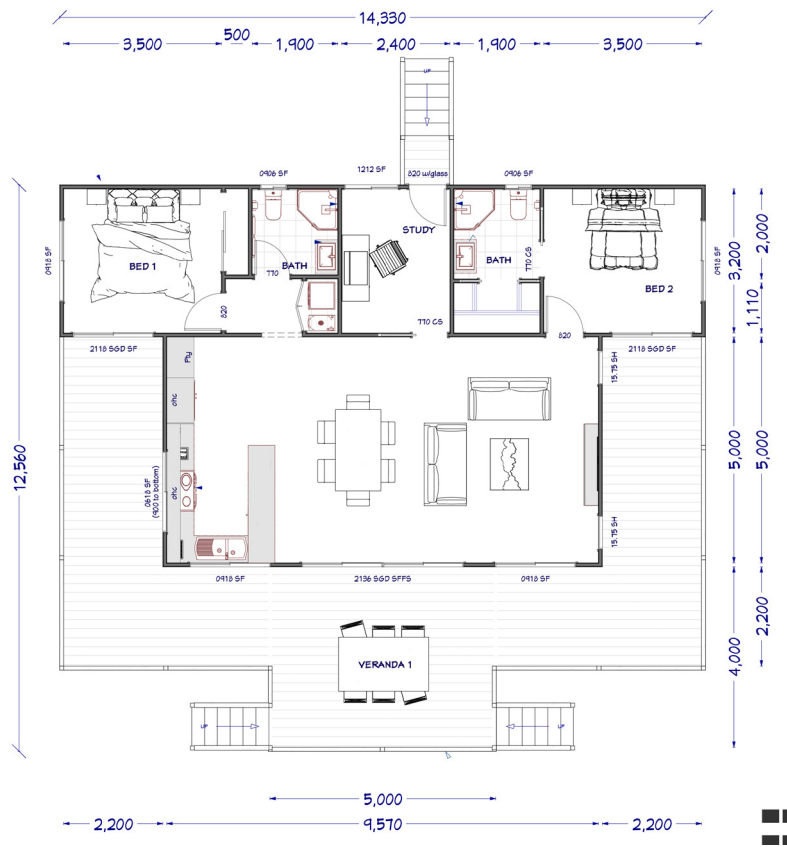
Ideal for singles or young couples, our compact Kit Homes Mudgee comes with a master bedroom and a small guest room. It has a big enough verandah where you can enjoy the sunset. Kingaroy is perfect for both privacy and socialising.

ENCLOSED	OTHER
60.02m <sup>2</sup>	21.94m <sup>2</sup>
<b>TOTAL 81.96m<sup>2</sup></b>	
 2  1  1	

For a larger view of our floor plans, please check our website.



**iBUILD**<sup>TM</sup>  
Building Solutions



**KIT HOMES**

**BENDIGO**

Blending sophistication and relaxation, the Kit Homes Bendigo is the perfect oasis for new families. With a sweeping verandah, it brings the holiday to your doorstep.

ENCLOSED	OTHER
98.06m <sup>2</sup>	66.14m <sup>2</sup>
<b>TOTAL 166.20m<sup>2</sup></b>	
2+	2  1

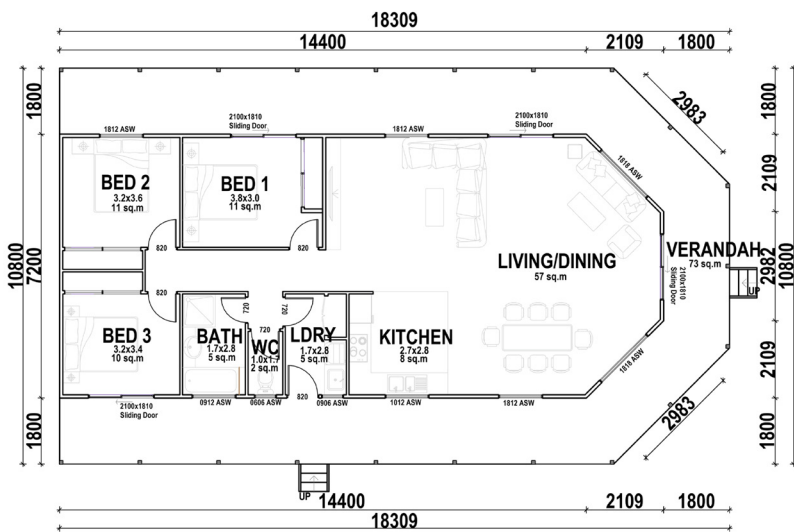
For a larger view of our floor plans, please check our website.



**KIT HOMES**

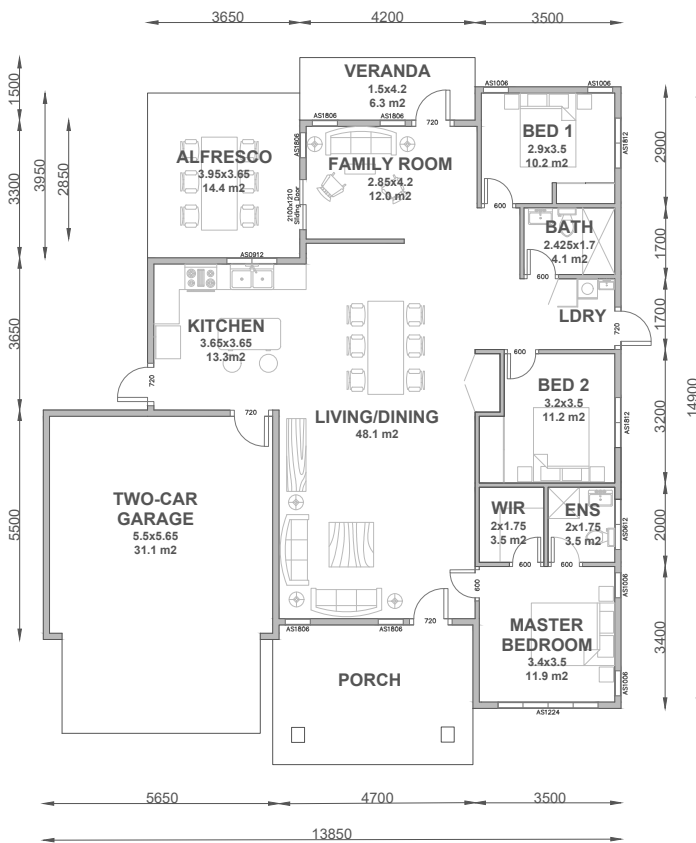
# BANKSIA

Embrace a welcoming yet a private compact home with our Banksia Kit Home, with a large Dining/Living and Kitchen area, the Banksia is perfect for both privacy and socialising.



ENCLOSED	OTHER
114.42m <sup>2</sup>	73.31m <sup>2</sup>
<b>TOTAL 187.73m<sup>2</sup></b>	




For a larger view of our floor plans, please check our website.



**KIT HOMES**

**SHEPPARTON**

Kit Homes Shepparton contains three spacious bedrooms including a master bedroom with ensuite. The stylish and modern home has also made entertaining a must with the inclusion of a spacious outdoor Alfresco entertaining area as well as a verandah.

ENCLOSED	OTHER
142.00m <sup>2</sup>	63.00m <sup>2</sup>
<b>TOTAL 205.00m<sup>2</sup></b>	
 3  2  1	

For a larger view of our floor plans, please check our website.

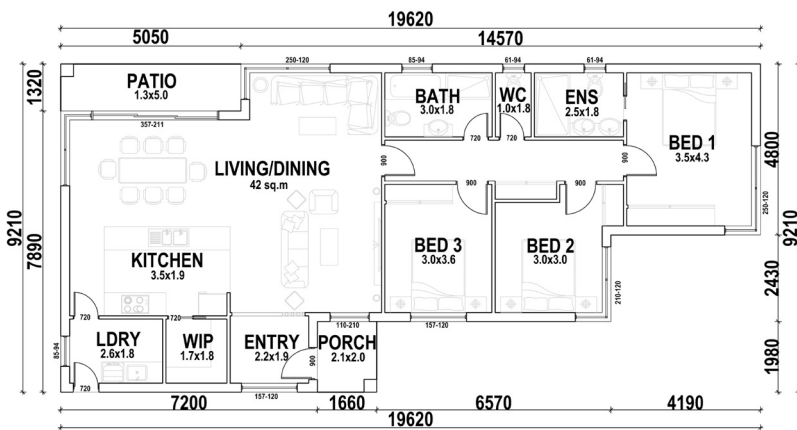


**iBUILD**<sup>TM</sup>  
Building Solutions

**KIT HOMES**

**GLADSTONE**

The Gladstone is a traditional but stylish kit home which includes everything a family needs. The 3 bedroom kit comes equipped with an open floor plan, outdoor patio, an ensuite in the master bedroom and two separate living areas allowing plenty of room to entertain guests.



ENCLOSED	OTHER
138.51m <sup>2</sup>	10.70m <sup>2</sup>
<b>TOTAL 149.21m<sup>2</sup></b>	
3	2
1	

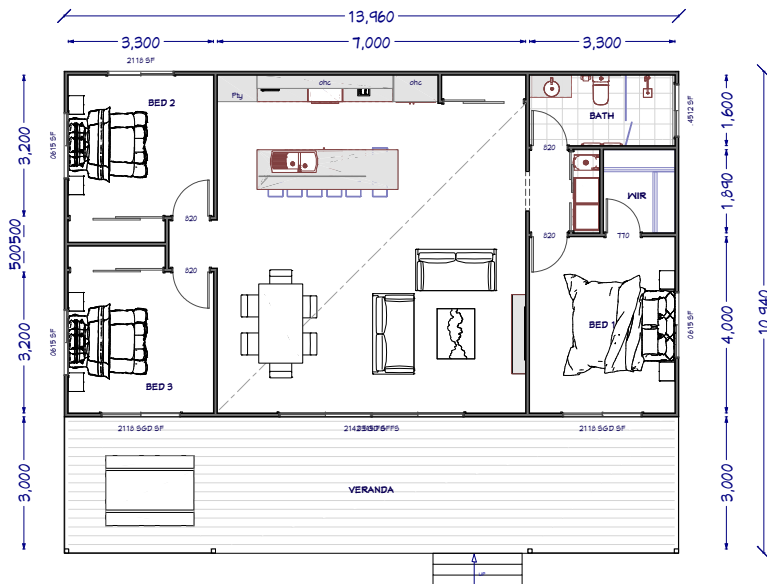
For a larger view of our floor plans, please check our website.



**KIT HOMES**

**BUNDABERG**

The Bundaberg has been impeccably crafted with a compact design to showcase an expansive space. The open plan living area and modern verandah which stretches across the length of the skillion roof is sure to bring your daydream to life.



ENCLOSED	OTHER
109.00m <sup>2</sup>	44.00m <sup>2</sup>
<b>TOTAL 153.00m<sup>2</sup></b>	
3	1  1

For a larger view of our floor plans, please check our website.

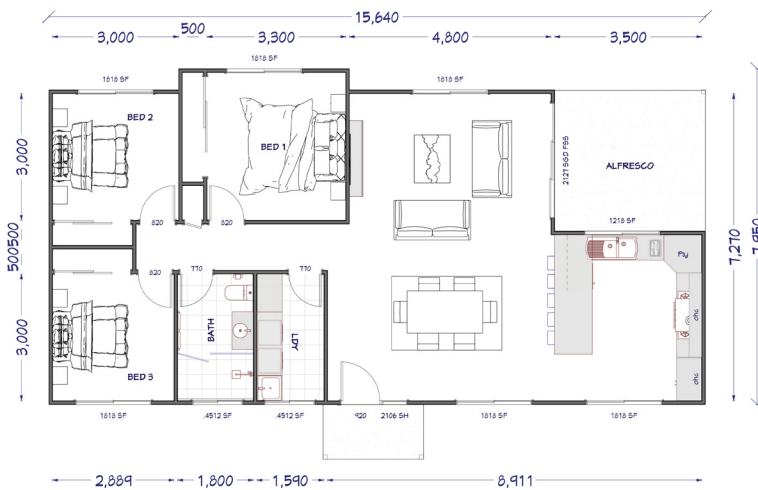


**iBUILD**<sup>TM</sup>  
Building Solutions

**KIT HOMES**

**PENRITH**

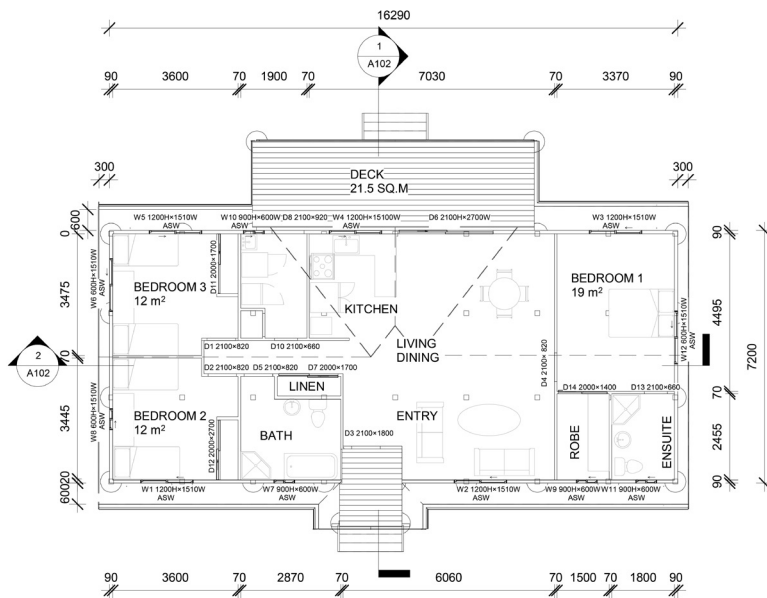
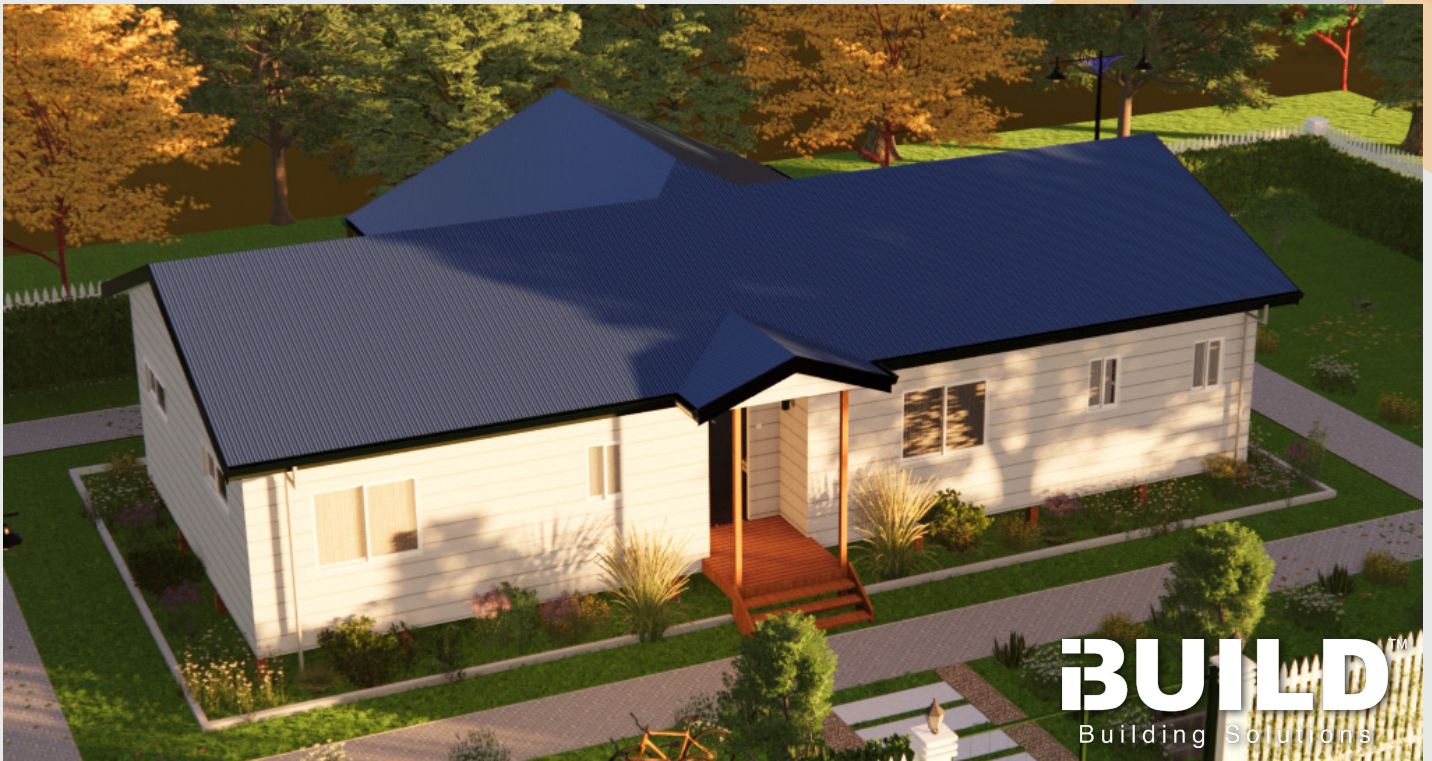
Our cosy Penrith Kit Home comes with a comfortable sized living area. Perfect place for the family to come together after a long day. Enjoy the snug atmosphere of Penrith with our calming alfresco area.



ENCLOSED	OTHER
106.00m <sup>2</sup>	16.00m <sup>2</sup>
<b>TOTAL 122.00m<sup>2</sup></b>	
3	1  1

For a larger view of our floor plans, please check our website.








**KIT HOMES**

**LISMORE**

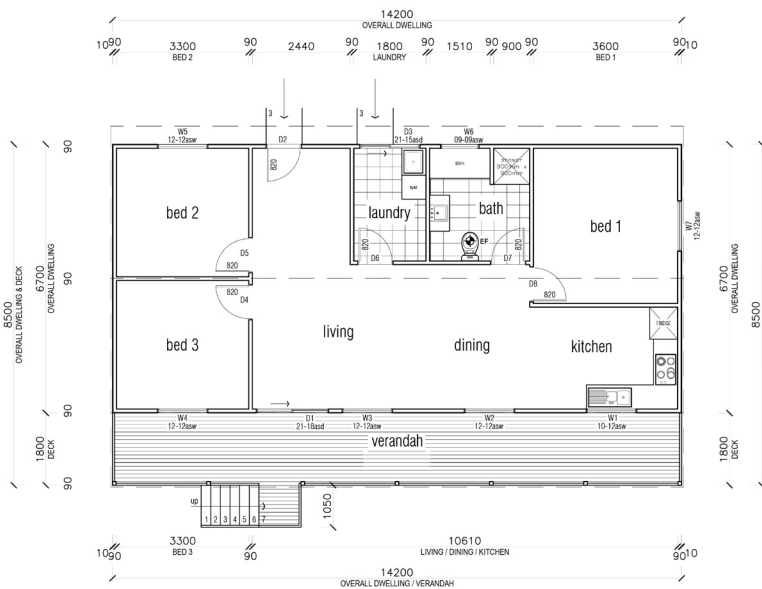
Practicality meets affordability. With an open plan living area and enough privacy for the bedrooms, the whole family can be in harmony with the Kit Homes Lismore.

ENCLOSED	OTHER
116.20m <sup>2</sup>	25.49m <sup>2</sup>
<b>TOTAL 141.69m<sup>2</sup></b>	
 3  2  1	

For a larger view of our floor plans, please check our website.






**iBUILD**<sup>TM</sup>  
Building Solutions



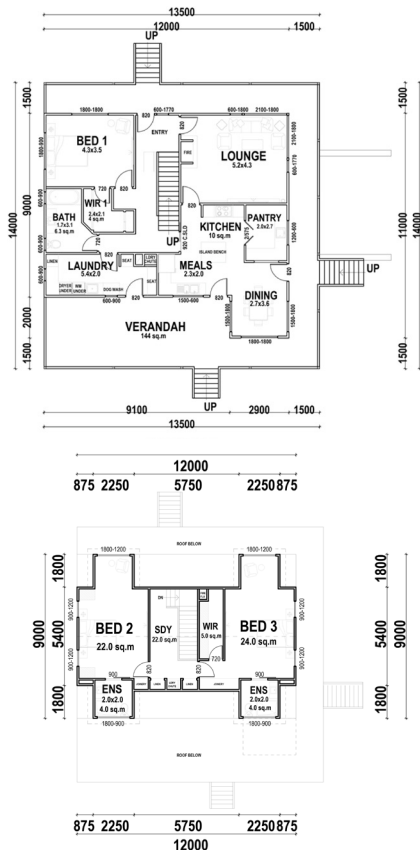
**KIT HOMES**

**WODONGA**

Enjoy life with our compact yet spacious Wodonga Kit home. With 3 bedrooms and a large living room this home is perfect for families wanting to socialize or just have the entire place to themselves. The impressive verandah gives you the delight of getting lost in nature at the comfort of your own home.

ENCLOSED	OTHER
95.14m <sup>2</sup>	25.56m <sup>2</sup>
<b>TOTAL 120.70m<sup>2</sup></b>	
 3  1  1	

For a larger view of our floor plans, please check our website.



**KIT HOMES**

**GRANDVIEW**

Embrace your stylish and classical side of life with the Grandview. This stunning double storey home is aesthetically pleasing with an amazing verandah and large butler's pantry.

ENCLOSED	OTHER
196.58m <sup>2</sup>	75.20m <sup>2</sup>
<b>TOTAL 271.78m<sup>2</sup></b>	
3+	3  1

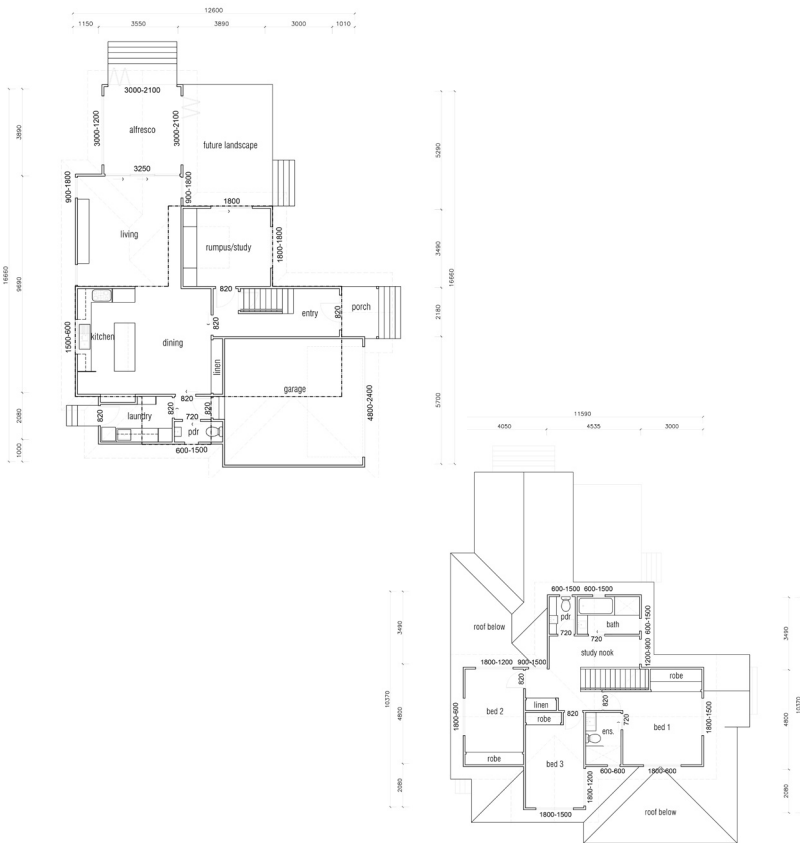
For a larger view of our floor plans, please check our website.



**KIT HOMES**

**NOWRA**

The modern and stylish Kit Homes Nowra is equipped with 3 bedrooms, a lovely alfresco and has access to all amenities. Perfect for families who want a hint of luxury.



ENCLOSED	OTHER
202.77m <sup>2</sup>	17.32m <sup>2</sup>
<b>TOTAL 220.09m<sup>2</sup></b>	
3+            4            1	

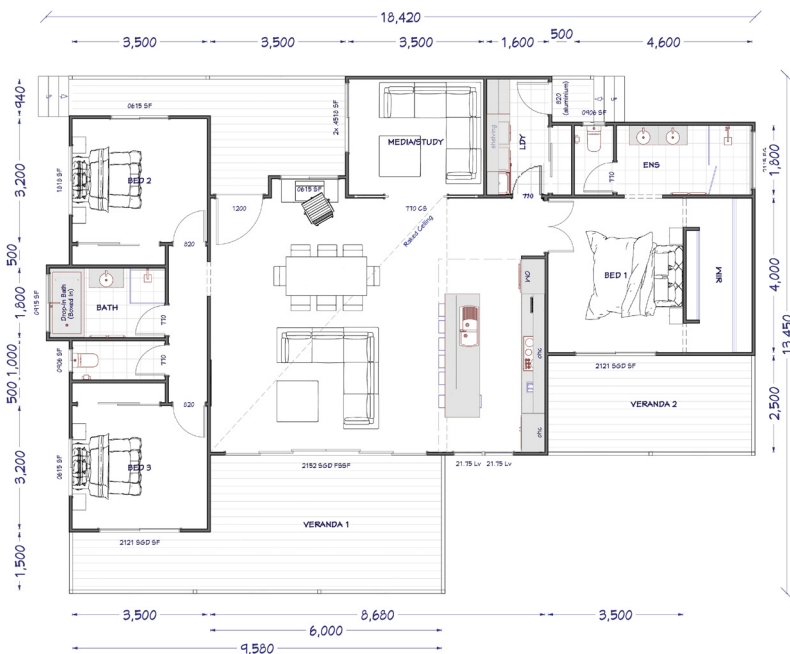
For a larger view of our floor plans, please check our website.



**KIT HOMES**

**TOWNSVILLE**

The luxurious Kit Homes Townsville is the exquisite option for families or a groups offering amazing views with two separate outdoor areas. This space provides the opportunity to come together or take a moment away to relax.



ENCLOSED	OTHER
137.78m <sup>2</sup>	69.89m <sup>2</sup>

**TOTAL 207.67m<sup>2</sup>**

3+
 2
 1

For a larger view of our floor plans, please check our website.



**KIT HOMES**

**TOOWOOMBA**

Build your dream home without compromising on space! The Toowoomba kit home offers a grand 4 bedrooms and a separate family area for your growing family. Enjoy the view from the living area which opens onto the verandah as you look out to the landscape that surrounds you.



ENCLOSED	OTHER
134.00m <sup>2</sup>	20.00m <sup>2</sup>
<b>TOTAL 154.00m<sup>2</sup></b>	

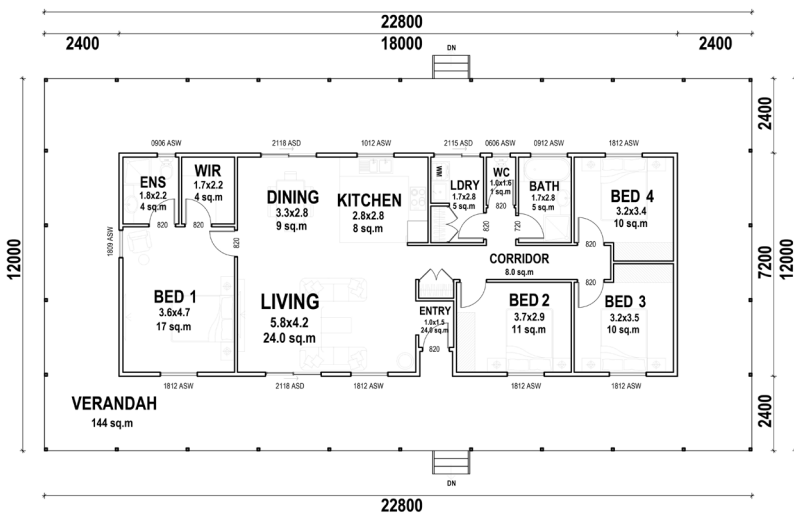
For a larger view of our floor plans, please check our website.






**KIT HOMES**

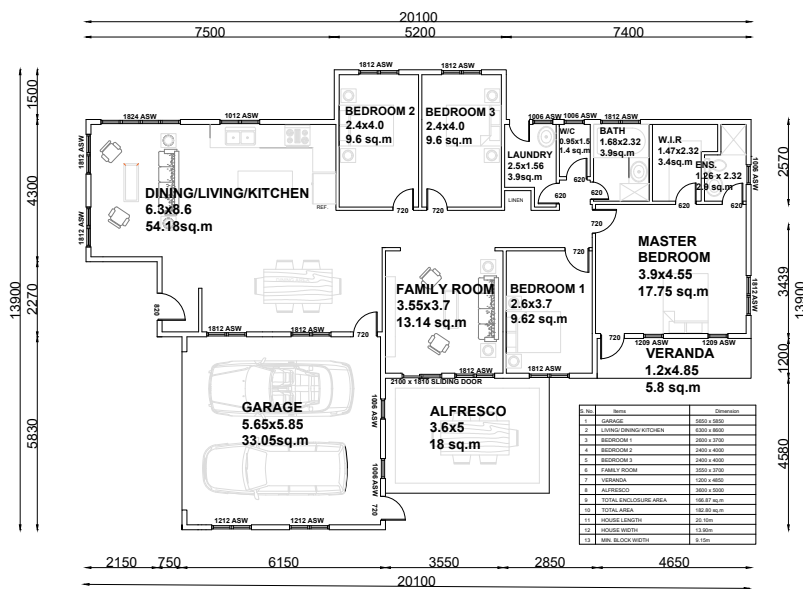
# MAYBANK

The sweeping verandah completes the stylish Maybank. The dining area opens onto the rear verandah making it ideal for alfresco dining, while the living area opens to the verandah at the front. You can sit outdoors in any aspect with this home, and enjoy the winter sun, or summer shade.



ENCLOSED	OTHER
129.60m <sup>2</sup>	144.00m <sup>2</sup>
<b>TOTAL 273.60m<sup>2</sup></b>	
 4  2  1	

For a larger view of our floor plans, please check our website.



**KIT HOMES**

**BALLARAT**

This attractive family home with an alfresco at the back lends itself to easy family living. The internal access from the double garage will keep you dry on the wettest days as you return home. With three large bedrooms and a master ensuite, this modern Ballarat offers you both comfort and elegance.

ENCLOSED	OTHER
<b>158.98m<sup>2</sup></b>	<b>23.82m<sup>2</sup></b>
<b>TOTAL 182.80m<sup>2</sup></b>	
4	2  1

For a larger view of our floor plans, please check our website.



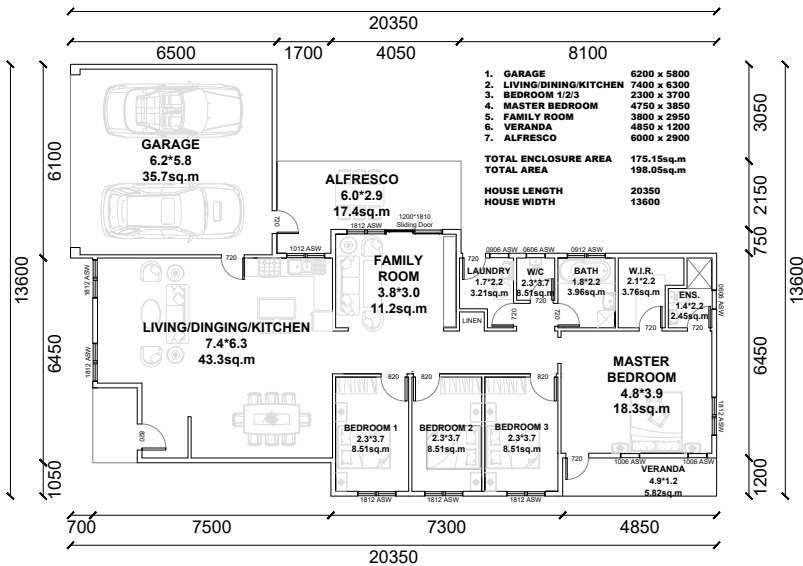


**iBUILD**<sup>TM</sup>  
Building Solutions

**KIT HOMES**

**ROCKHAMPTON**

This modern 4-bedroom kit homes Rockhampton includes a master ensuite and features separate living and family areas, with easy access to all amenities including an alfresco, while the entry from the double garage means that you can keep dry from your car to inside your dream home.

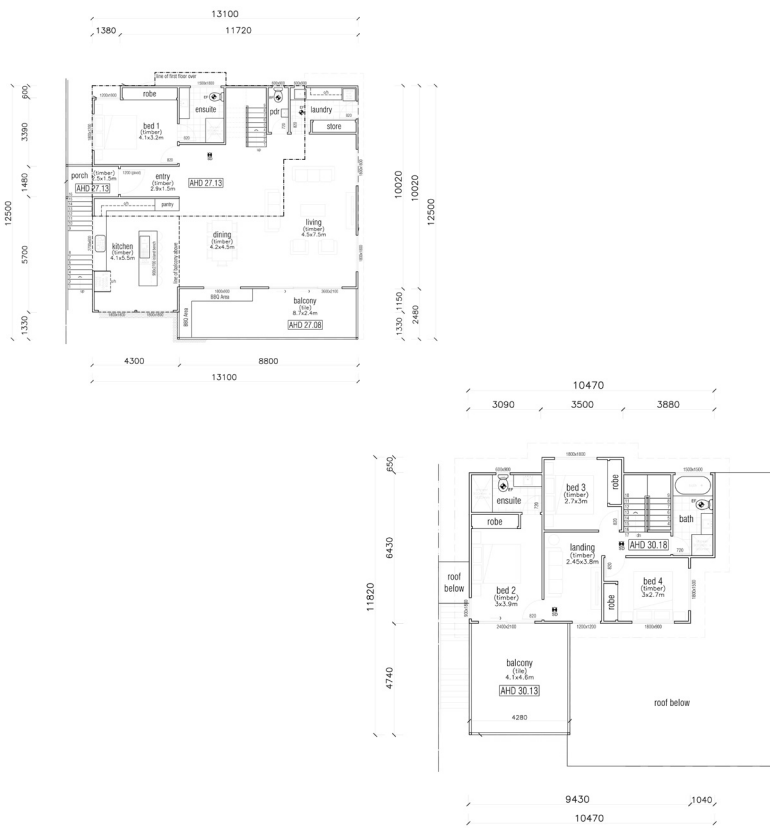


ENCLOSED	OTHER
<b>151.58m<sup>2</sup></b>	<b>23.22m<sup>2</sup></b>
<b>TOTAL 174.80m<sup>2</sup></b>	
4	2
	1

For a larger view of our floor plans, please check our website.



**iBUILD**<sup>TM</sup>  
Building Solutions



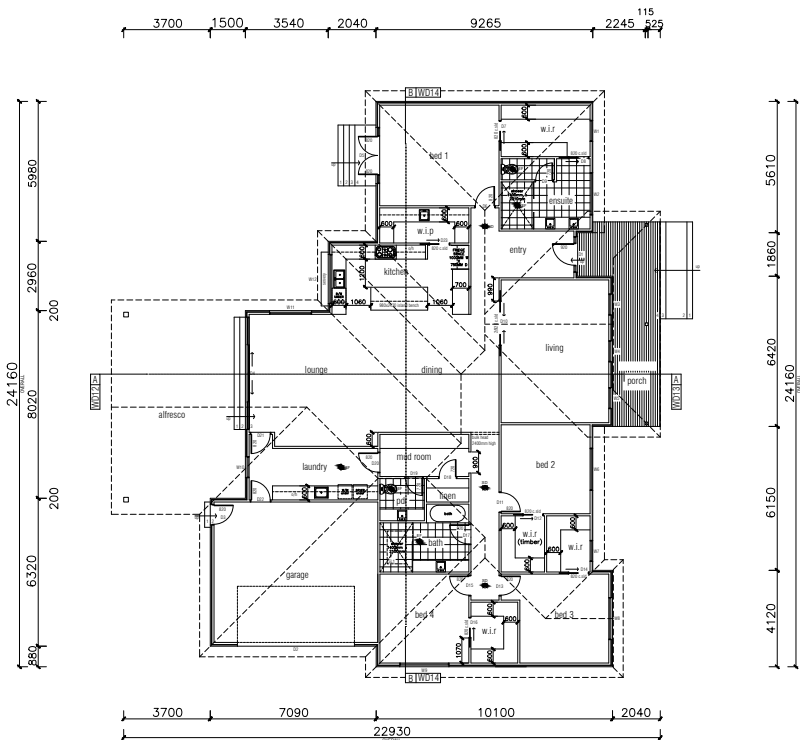
**KIT HOMES**

**VALLEY HEIGHTS**

The Valley Heights reigns supreme. The modern lines of this magnificent home enable you to make the most of the view. With balconies on both levels, this home will look great in any surroundings.

ENCLOSED	OTHER
204.82m <sup>2</sup>	50.08m <sup>2</sup>
<b>TOTAL 254.90m<sup>2</sup></b>	
4	2
	1

For a larger view of our floor plans, please check our website.



**KIT HOMES**

**SPRINGWOOD**

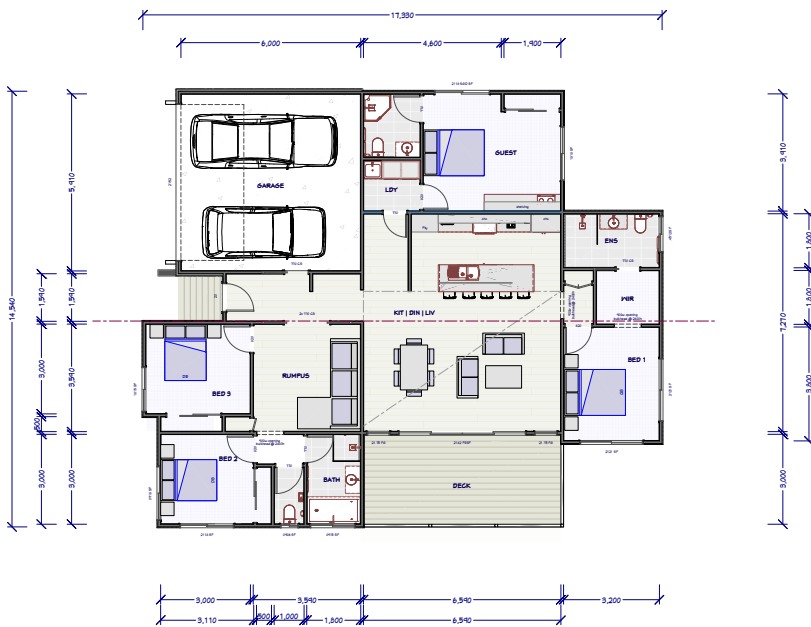
Grand country living with a modern and sophisticated touch. The Kit Homes Springwood provides an extensive layout for growing families looking for their own space.

ENCLOSED	OTHER
327.44m <sup>2</sup>	62.88m <sup>2</sup>

**TOTAL 390.32m<sup>2</sup>**

 4
  2
  1

For a larger view of our floor plans, please check our website.



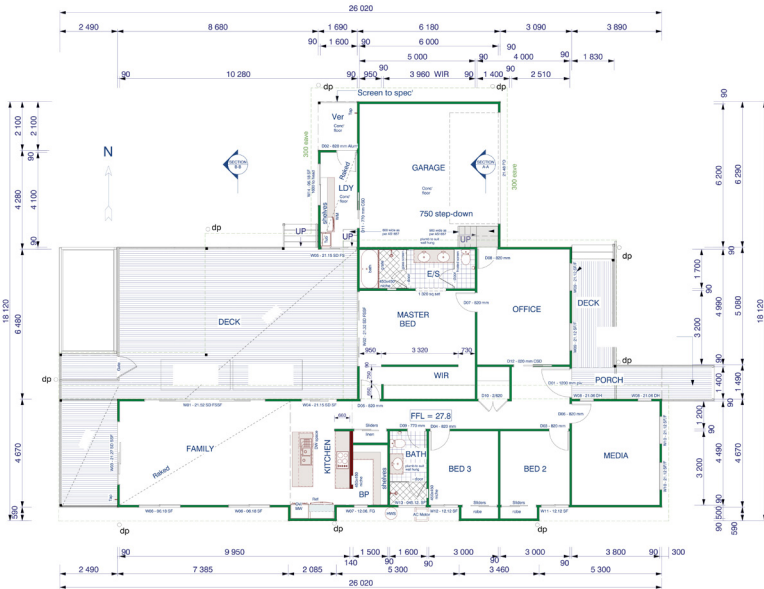
**KIT HOMES**

**NEWCASTLE**

The attractive exterior of the kit homes Newcastle exhibits a modern and sophisticated look. The floor plan offers great living areas for all family members so that everyone feels like they get their own space.

ENCLOSED	OTHER
196.50m <sup>2</sup>	64.00m <sup>2</sup>
<b>TOTAL 260.50m<sup>2</sup></b>	
4	3
	1

For a larger view of our floor plans, please check our website.



**KIT HOMES**

**DUBBO**

The spacious Dubbo offers a generously sized family area accompanied by a media room for all your entertainment needs. With a large deck space and 2 porches making it the perfect space to wind down.

ENCLOSED	OTHER
219.80m <sup>2</sup>	106.02m <sup>2</sup>
<b>TOTAL 325.82m<sup>2</sup></b>	

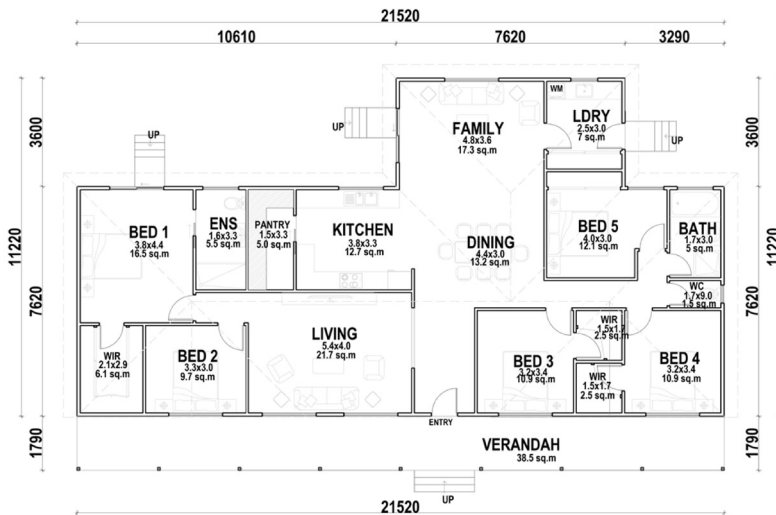
For a larger view of our floor plans, please check our website.



**KIT HOMES**

**ALBURY**

This exclusive 4-bedroom home is perfect for those who are looking for a simple yet classy home. Equipped with roomy living areas, a spacious study room and a long verandah, the kit home Albany is perfect for large extended families.



ENCLOSED	OTHER
191.41m <sup>2</sup>	38.52m <sup>2</sup>
<b>TOTAL 229.93m<sup>2</sup></b>	
4+	2  1

For a larger view of our floor plans, please check our website.



**KIT HOMES**

**CENTRAL COAST**

The spacious, double storey Kit Homes Central Coast provides the traditional appeal of a country-style rural home with the interior qualities of a contemporary and modern estate.

ENCLOSED	OTHER
183.00m <sup>2</sup>	59.00m <sup>2</sup>
<b>TOTAL 242.00m<sup>2</sup></b>	

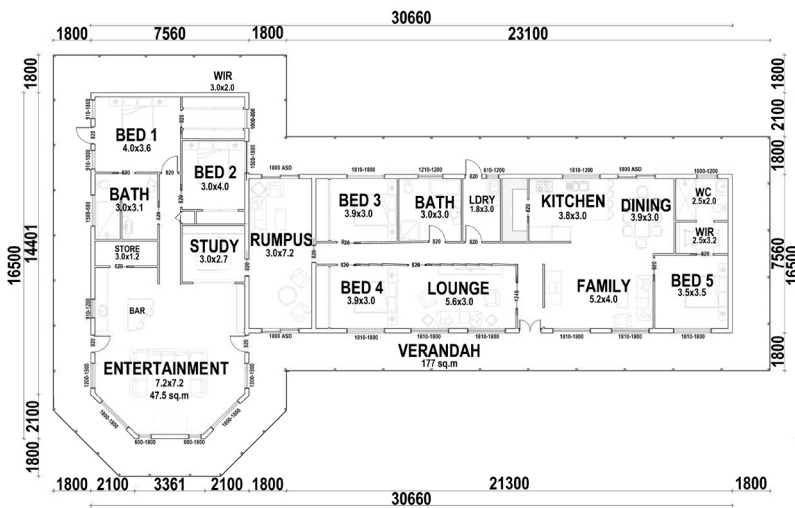
For a larger view of our floor plans, please check our website.



**KIT HOMES**

**WAGGAWAGGA**

The modern and contemporary Kit Home Wagga Wagga includes five bedrooms, separate living and family areas and easy access to all amenities such as the bar. With a hint of luxury, this kit home is for you!



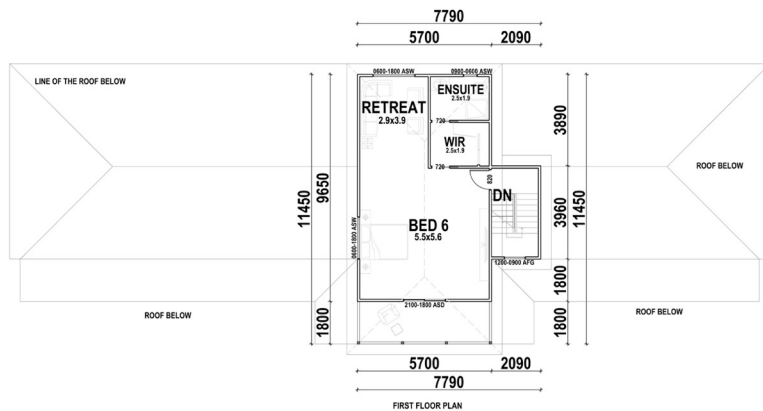
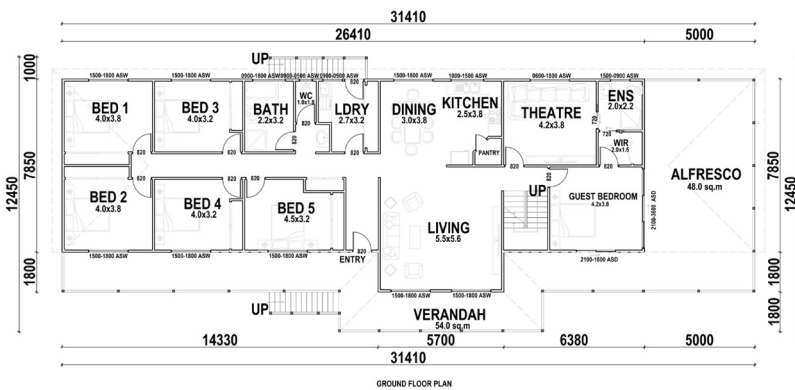
ENCLOSED	OTHER
308.58m <sup>2</sup>	181.93m <sup>2</sup>

**TOTAL 490.51m<sup>2</sup>**

 5
  3
  1

For a larger view of our floor plans, please check our website.





**KIT HOMES**

**GOLD COAST**

The grandeur of the Gold Coast boasts 7 bedrooms, spacious living areas, a home theatre and two outdoor living areas, with a verandah and an alfresco. The Gold Coast emanates luxury and is perfect for large families.

ENCLOSED	OTHER
280.04m <sup>2</sup>	109.52m <sup>2</sup>
<b>TOTAL 390.56m<sup>2</sup></b>	
7+	3
	1

For a larger view of our floor plans, please check our website.